



49ft Flybridge Cruiser



Designed and built for long range cruising and entertaining

Designed and built for long range cruising and entertaining the new 49 has undertaken sleek Euro- styled decor appointments to meet the expectations of current buyers, she has three grande cabins, two double cabins and a bunk cabin which comfortably accommodates 8- 10 adults, with two very spacious bathrooms including a private en-suite.

This combined with her huge open cockpit area enclosed flybridge and twin 700 hp Cat Electronic Turbo Diesel power plants will propel this luxury vessel to a breathtaking 30Kts plus, this is the boat for the ultimate get away. The new Caribbean 49 has grown in stature and volume and she is a fitting new flagship.

Specifications

Adult Capacity: 21

Fuel Capacity: 2,700L

Approx hull Weight: 22,500kg

Beam: 4.88m (16")

Twin 700hp CAT electronic diesel

Overall Length: 14.77m (48'6") + swim and bow platforms

Cockpit Area: 15.33 sq m (165sq")

Gearboxes: Twin Disk 5114A

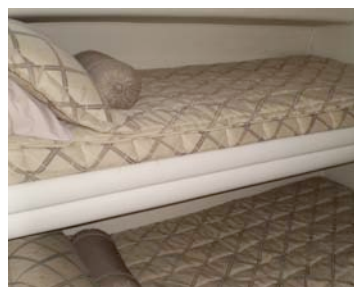
Sleeping: 3 cabins, 6 berth lounge 2-3

Water Capacity: 900L

Draft: 1.37m

Cruise Speed: 20-24knots

Top Speed: 30knots



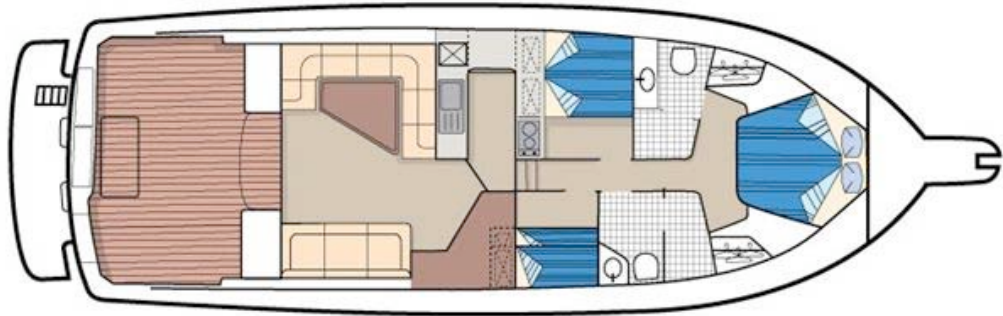
WANT TO KNOW MORE? CONTACT FRASER MARINE NOW:

Phone: 0428 857116

Email: info@frasermarine.com.au



49ft Flybridge Cruiser



Standard Features

Mechanical

- Automatic bilge and bathroom sump pump with high water alarms
- Ball valves on through hull fittings below water line
- Dual fuel tanks with baffles and gauges
- Electric chain counter
- Electric hydraulic trim tabs
- Engine and generator hour meters
- Engine fuel shut off valves
- Engine room ladder
- Engine room lights
- Engine room sound insulation
- Engine vibration isolator mounts
- External engine sea water strainers
- Fresh water tank with electric gauge
- Hot and cold pressurised water to galley, owner's ensuite, guest bathroom, flybridge and cockpit
- Hydraulic steering
- Manganese bronze skegs and rudders
- Muffling system with fibreglass cowls
- Nickel aluminium bronze propellers - 5 blade 27 X 34
- Reverse cycle air conditioning, 1 x 24K BTU and 1 x 7K BTU
- Twin Caterpillar C12 (700 hp) electronic engines
- Twin Disc 'Quick Shift' electronic controls
- Twin Disc 5114A (@900 hp) electronic gear boxes
- Bow Thruster
- Twin vacuflush toilet system with gauge and waste holding tank discharge through hull and/or deck
- Water separating fuel filters
- 1 ½ hp compressor - utectic refrigerator
- 75 litre, 240 volt and engine heated hot water service
- 316 Stainless propeller shafts

Electrical

- AC/DC electrical control panel with dual 240 volt shore power inlets, circuit breakers, amp meters and volt meters
- AC power points through out
- Automatic battery charger
- Battery paralleling system
- Bonding system with transom sacrificial anodes
- Colour coded and loomed wiring
- Four 200 amp/hr batteries with master switches
- Generator 13.5 KVA with sound shield, muffler and remote stop/start
- Navigation lights
- Reverse polarity warning light

State Room

- AC power point
- Cabin lighting
- Chain / rope locker access
- Floor carpet and underlay
- Hanging wardrobes x 2
- Large walk around island berth with inner spring mattress
- LCD flat screen TV with remote
- Over head reading lights
- Radio / CD sound system with remote
- Reverse cycle air conditioning, 7K BTU
- Storage lockers under bed with gas strut for easy access
- Teak drawers under bed
- Teak lockers under deck walkway
- Tinted over head deck hatch with fly screen
- Upholstered bed head and bed edging
- Vinyl hull and head liner

WANT TO KNOW MORE? CONTACT FRASER MARINE NOW:

Phone: 0428 857116

Email: info@frasermarine.com.au

49ft Flybridge Cruiser



Ensuite

- AC power point
- Completely moulded fibreglass unit with separate shower
- Integrated shower sump with auto pump
- Mirror, Toilet roll holder, Towel ring
- Private entrance door from owner's stateroom
- Stowage lockers
- Tinted over head deck hatch with fly screen
- Vacuflush toilet
- Vanity with basin, hot and cold water flick mixer faucet
- 12 volt recessed quartz halogen lighting

Port Side Guest Cabin

- Bedside drawer unit
- Floor carpet and underlay
- Large double bed with inner spring mattress
- Storage lockers under bed
- Teak drawers under bed
- Teak lockers under deck walkway
- Tinted over head deck hatch with fly screen
- Upholstered bed head and bed edging
- Vinyl hull and head liner
- 12 volt quartz halogen lighting

Starboard Side Guest Cabin

- Floor carpet and underlay
- Storage lockers under bed
- Tinted over head deck hatch with fly screen
- Twin bunks with quilted mattresses
- Upholstered bed edging
- Vinyl hull and head liner
- 12 volt quartz halogen lighting

Guest Bathroom

- AC power point
- Completely moulded fibreglass unit with separate shower
- Entrance door from passage way
- Integrated shower sump with auto pump
- Mirror, Toilet roll holder, Towel ring
- Stowage lockers
- Tinted over head deck hatch with fly screen
- Vacuflush toilet
- Vanity with basin, hot and cold water flick mixer faucet
- 12 volt recessed quartz halogen lighting

Cockpit

- Access hatch to fuel tank and steering gear
- Dual fibreglass fuel tanks with baffles and dip stick
- Dual shore power inlets and leads
- Fibreglass moulded live bait tank / ice box in transom
- Fold out ladder recessed into swim platform and located under hatch
- Full width swimming platform
- Large underfloor cockpit stowage locker
- Mooring cleats
- Moulded cockpit steps (2)
- Port side fibreglass moulded ice box with stainless steel inner and eutectic fridge / freezer
- Salt water deckwash pump
- Side stowage lockers, raised to allow placement of feet under
- Stainless steel hand rails
- Starboard side fibreglass moulded bait prep centre incorporating sink, cutting board, drawers and stowage lockers
- Transom mounted shower
- Two piece transom door
- 12 volt cockpit lighting
- 12 volt flood lights (2)

49ft Flybridge Cruiser



Deck

- Anchor wash down connection
- Bow platform with automatic anchor raising system, footswitch, plough anchor and chain
- Colour co-ordinate hull and deck lines
- Divided rope and chain locker with moulded fibreglass deck access hatches
- Full length bow rail with ensign staff
- Heavy duty aluminium rubbing strip
- Mooring cleats
- Non skid surface

Flybridge

- AM/FM radio / CD with speakers to flybridge and cockpit
- Bar fridge
- Compass
- Comprehensive station controls and instrumentation
- Electronic chain counter
- Electronics area on dash
- Full fibreglass hardtop incorporating over head console and access hatch
- Fully enclosed flybridge with fixed front screens, sliding side windows and rear curtains
- Fully upholstered seating incorporating stowage lockers under
- Heavy duty windscreen wipers and washers (3)
- Horns
- Hydraulic steering
- Lockable access hatch from cockpit
- Pompanette helm seats (2)
- Rear safety rail
- Remote control spotlight
- Sink unit
- Stainless steel double railed ladder with heavy duty steps
- Tinted overhead hardtop hatches X 3
- Twin Disc 'Quick Shift' electronic controls
- 12 volt flood lights (2)
- 12 volt lighting
- 12 volt socket

Saloon

- AC power points
- Clock and barometer
- Colour co-ordinated curtains and pelmets
- Entertainment unit featuring remote controlled flat screen TV, DVD, Stereo, CD stacker, bar fridge, cocktail cabinet, ice maker, storage lockers, AC/DC circuit boards
- Floor carpet and underlay
- Large port side U-shaped dinette and table
- Leather upholstery
- Reverse cycle air conditioning, 24K BTU
- Sliding side windows with flyscreens
- Solid fibreglass front screen
- Sound insulated floor with hatches for engine access
- Starboard side convertible lounge / double bed and fold up bunk
- Trimmed throughout with rear bulkhead incorporating central sliding double glass doors
- 12 volt quartz halogen lighting flush mounted in head lining

Galley

- AC power points
- Built in rubbish bin
- Dish washer (drawer)
- Eutectic side by side refrigerator and freezer
- Fire extinguisher
- Hot and cold water flick mixer faucet
- Inbuilt galley featuring spacious galley top, drawers, cupboards, slider unit and servery
- Large convection microwave oven and grill
- Sink with draining board
- Teak and holley flooring
- Two burner ceramic cooktop with fiddle rail
- 12 volt flush mounted quartz halogen lighting