



## 40ft Flybridge Cruiser



### *The successful and highly sought after flybridge cruiser*

The Caribbean 40 Flybridge Cruiser is a luxurious vessel ideal for entertaining or the ultimate getaway. This spacious twin cabin vessel includes, a master double island bed and 2 guest bunks which comfortably accommodates 6-8 adults. Boasting an air conditioned fully appointed galley including microwave, cook top and fridge/freezer. Together with its impressive saloon consisting of a dinette and lounge together with a state of the art entertainment unit, Onan genset, cock pit fridge/freezer and twin 500 hp electronic diesel power plant is the vessel that most people would only dream about.

Each Caribbean vessel delivers over 50 years of experience behind her timeless lines, solid engineering reliability and blue-water offshore performance. All of which has earned Caribbean, the respected reputation as one of the finest boat manufacturers in the world today. Caribbean boats are proudly built at Scoresby Melbourne, and exported all over the world. Caribbean, the boat the experts buy.

### Specifications

Adult Capacity: 17

Fuel Capacity: 2000L

Approx hull Weight: 12000kg

Beam: 4.30m (14'2")

Twin 500 hp Cummins Electronic Diesel QSC 500

Overall Length: 12.20m (40') + swim and bow platforms

Cockpit Area: 10.30 sq m (111sq')

Sleeping: 2 cabins, 4 berth, plus saloon lounge 2-3

Water Capacity: 650L

Draft: 1.15m (3'9")

Cruise Speed: 20-24knots

Top Speed: 30knots

Height above waterline: 3.56m (12') + Hard top



**WANT TO KNOW MORE? CONTACT FRASER MARINE NOW:**

Phone: 0428 857116

Email: [info@frasermarine.com.au](mailto:info@frasermarine.com.au)



## 40ft Flybridge Cruiser



### Standard Features

#### Mechanical and Electrical

- 316 Stainless steel propeller shafts.
- Four bladed aluminium bronze propellers.
- Manganese bronze skegs and rudders.
- Muffling system with fibreglass cowls.
- External engine seawater strainers.
- Gate valves on underwater thru-hull fittings.
- 240-volt power points, shore power inlet and wiring.
- 12/240-volt switchboards with circuit breakers/fuses.
- Two 200-amp hour batteries with master switches.
- Flybridge control station with electronic single lever gear & throttle controls, hydraulic steering and comprehensive instrumentation.
- Water separating fuel filters.
- Fuel shut off valves.
- Navigation and anchor lights.
- Cockpit lighting.
- 30 litre, 240 volt and engine heated hot water service.
- Hot and cold pressurised water to galley, bathroom and cockpit.
- Automatic bilge and bathroom sump pumps.
- 12 volt reversing winch, operational from flybridge helm & foredeck.
- Electric fuel gauge.
- Dual horns.
- Stereo CD player with four speakers & fixed flybridge remote.
- CD stacker unit.
- Rudder indicator.
- Sacrificial anodes.
- 240-volt diesel generator with sound shield.
- Automatic battery charger.
- Electric hydraulic trim tabs.
- Waste holding tank with through hull and / or deck discharge.
- Electric fresh water tank gauge.
- Eutectic 240-volt refrigeration with raw water header tank.
- Air conditioning.

#### Forward Cabin

- Large Island bed with inner spring mattress.
- Owner's private access to bathroom.
- Overhead deck hatch with fly screen.
- Side stowage trays.
- Hanging robe.
- 12 volt quartz halogen lighting.
- 240-volt power outlet and TV socket.
- Under bed drawer unit and stowage lockers.
- Contemporary hull lining material.
- Floor carpet throughout.
- Divided self-draining chain and rope locker with access panel

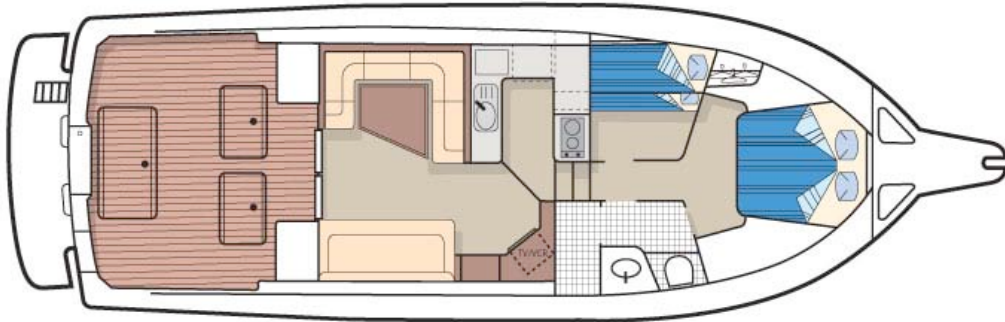
#### Guest Cabin

- Twin full size berths with quilted mattresses.
- Under bed drawer unit and stowage lockers.
- 12 volt quartz halogen lighting.
- Overhead deck hatch with fly screen.
- Contemporary hull lining material.
- Floor carpet throughout.
- Second drawer unit.

#### Main Stateroom

- Trimmed throughout with rear bulkhead incorporating central sliding double white powder-coated aluminium & glass doors and rear windows.
- Solid fibreglass front screen.
- Sliding side windows with flyscreens.
- Entertainment unit featuring remote controlled LCD TV and DVD, stereo, CD stacker, bottle storage and 12/240 volt circuit breaker & fuse boards, battery switches and winch circuit breaker switch.
- Starboard side convertible lounge/double bed and fold up bunk.
- Port side U-shaped dinette with seating for 5.
- Colour co-ordinated curtains and pelmets.
- Floor carpet throughout.
- Sound insulated floor with hatches for engine access.
- 240-volt power outlet.
- 12-volt quartz halogen lighting flush mounted in head lining.
- Barometer and clock.

## 40ft Flybridge Cruiser



### Bathroom

- Completely moulded fibreglass unit.
- Vanity featuring basin with hot and cold water flick mixer tap.
- Large shower with clear perspex door and intergraded shower sump with pump.
- Overhead deck hatch with fly screen.
- Vacuflush toilet system with holding tank and electronic gauge.
- Wall mirror, towel rail and toilet roll holder.
- 12-volt lighting and 240 volt power outlet.

### Galley

- Inbuilt galley featuring spacious galley top, drawers, cupboards, slider unit and servery.
- FRP moulded sink with draining board.
- Hot and cold water flick mixer tap.
- Eutectic 160-litre refrigerator and 72-litre freezer.
- Large convection microwave oven.
- Two-burner ceramic cook top with fiddle rail.
- 12-volt flush mounted quartz halogen lighting.
- 240-volt power outlets.

### Deck

- Bow platform with automatic anchor raising system, footswitch, CQR anchor and chain.
- Divided rope and chain locker with moulded fibreglass deck access hatches.
- Mooring cleats.
- Full length bow railing with ensign staff.
- Non-skid surface.
- Heavy-duty aluminium rubbing strip.
- Colour co-ordinated hull, deck and flybridge lines.

### Cockpit

- Access hatch to fuel tank and steering gear.
- Side stowage lockers, raised to allow placement of feet under.
- 12 volt cockpit lighting.
- Moulded cockpit steps.
- Shore power inlet and lead.
- Mooring cleats.
- Large underfloor cockpit stowage locker.
- Fibreglass fuel tank with baffles and dipstick.
- Port side fibreglass moulded ice box with stainless steel inner and eutectic fridge / freezer.
- Starboard side fibreglass moulded bait prep centre incorporating sink, drawers and stowage lockers.
- Fibreglass moulded live bait tank (not plumbed) / ice box in transom.
- Saltwater deck wash pump.
- Stainless steel handrails.
- Two piece transom door.
- Full width swimming platform with folding ladder.
- Transom mounted shower.

### Flybridge

- Stainless steel double-railed ladder with heavy-duty steps.
- All round flybridge railing.
- Three piece acrylic deflection screen.
- Comprehensive station controls & instrumentation.
- Deluxe helmsman and companion chairs.
- Fibreglass moulded, fully upholstered seating, incorporating stowage lockers and ice box.
- 12-volt socket.
- Compass.
- Stereo speakers & fixed remote control.
- Full fibreglass hardtop incorporating an overhead console for radio equipment.
- All round clear curtains with zip door and windows.
- Flybridge ladder safety latch.

**WANT TO KNOW MORE? CONTACT FRASER MARINE NOW:**

Phone: 0428 857116

Email: [info@frasermarine.com.au](mailto:info@frasermarine.com.au)